

**SUBJECT: LOWER CURTAIN ASSEMBLY – ALL CIM
Part # 9051823-01**

**Number: 2020-01.1
Product: CIM Cubers
Date Issued: JAN 2020
Date Updated: May 2021
From: Technical Services**

Updated Lower Curtain Assembly to aid in water redirection on the bottom of the Evaporator. On any CIM Cuber with broken tabs on the Water Return at the bottom of the Evaporator, installing the new Curtain will assist in water being directed back into the Water Sump.

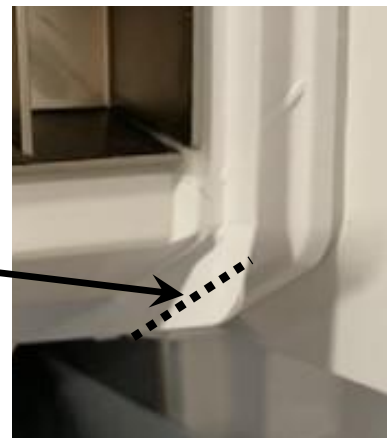


← Extended rib (inside the outer rib) on Curtain directs water into the Sump.

**NOTE: DON'T TRIM TABS FLUSH
TO BOTTOM OF EVAPORATOR**



Trim remaining tabs about 3/16" to 1/4" from bottom of Evaporator(s)



If tab(s) have broken flush, apply a bead of NSF food grade silicone along previous location of tab.