



# ELEVATION SERIES CUBE ICE MAKER

## CIMO826/O825

**Ice-O-Matic**  
Ice. Pure and Simple

### Model:

- CIMO826
- CIMO825



Energy Star Certified  
on certain models



CIMO826 ON B42

## Features and Benefits

- 22.25" (565 mm) wide space-saving design.
- Produces up to 922 lbs (418 kg) of ice per day.
- *Energy and Environment*
  - Exceeds 2018 DOE (Department of Energy) regulations.
  - Up to 20% more energy efficient than other models.
  - Environmentally friendly, including BPA-free plastic and recyclable parts.
- *Sanitation*
  - Plastic Food Zone eliminates hard-to-clean nooks and crannies, allowing for effortless wipe down and easy, long-lasting sanitation.
  - Built in Agion® ensures unbeatable antimicrobial protection.
  - Smart LED light indicates machine status and when cleaning is required.
  - Simple, one-touch controls for sanitization and descaling.
  - BPA-free snap-in, snap-out dishwasher-safe components.
- *Unique Dual Exhaust* - Air-cooled machines are designed to discharge hot air from both the side and top of the unit, increasing installation flexibility and reducing the potential of obstructed exhaust.
- *Universal Smart Harness™* control board simplifies installation and servicing with better access, digital diagnostics, universal components and common configuration.



**SafeIce**

\*Available for factory or field install

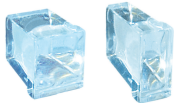
SafeIce Purification System is an add-on option for CIM machines that destroys Coronavirus, Flu, Odors, Mold and other biological contaminants, increasing the life of the machine by up to 30%.



<https://www.youtube.com/watch?v=toReJT8QG6A&t=7s>

## Ice Form

FULL CUBE DIMENSIONS	
W x D x H (in.)	7/8 x 7/8 x 7/8
W x D x H (mm)	22 x 22 x 22
HALF CUBE DIMENSIONS	
W x D x H (in.)	3/8 x 7/8 x 7/8
W x D x H (mm)	10 x 22 x 22



**CUBE**

## Bin Chart *Kits for Combining Wider Bins with Smaller Models*

		ICE STORAGE BINS										
		Model No.	B25	B40	B42	B55	B110	B700	B1000	B1300	B1325	B1660
		Capacity	242 lbs (110 kg)	344 lbs (156 kg)	351 lbs (160 kg)	510 lbs (232 kg)	854 lbs (388 kg)	680 lbs (308 kg)	1,000 lbs (454 kg)	1,320 lbs (599 kg)	1,325 lbs (601 kg)	1,660 lbs (753 kg)
		Width	30 in (762 mm)	30 in (762 mm)	22 in (559 mm)	30 in (762 mm)	48 in (1,219 mm)	30 in (762 mm)	48 in (1,219 mm)	48 in (1,219 mm)	60 in (1,524 mm)	60 in (1,524 mm)
Kits	CIMO826		KBT19		Kit Not Required	KBT19	KBT23C	Hold Down Securement Recommended				
	CIMO825		KBT19		Kit Not Required	KBT19	KBT23C	Hold Down Securement Recommended				

\*See Ice-O-Matic Price List for Adapter Kits to combine ice makers with most available ice/beverage dispensers.

## Options & Accessories

WATER FILTERS		
Ice Machine Model	Manifold	
	System	Replacement
CIMO826	IFQ2	IOMQ (2)
CIMO825		

Note: All modular cube CIM units can be installed with manufacturer approved ozone delivery systems.

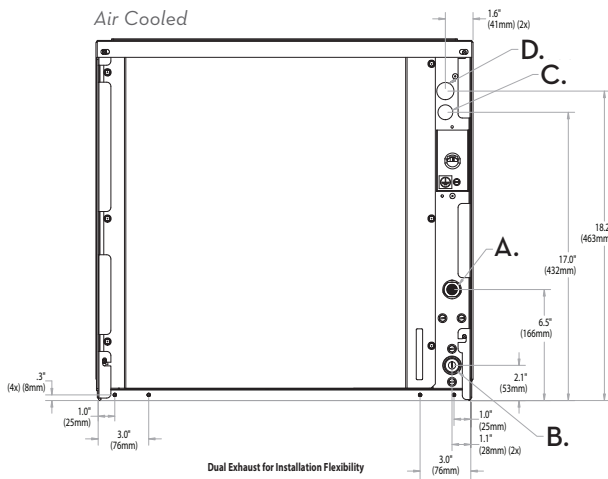
## Ice Maker Warranty

COMMERCIAL WARRANTY	
<b>Ice Maker</b>	<b>3 YEARS</b> parts and labor
<b>Evaporator and Compressor</b>	<b>5 YEARS</b> parts
<b>Evaporator</b> (when enrolled in our filter program)	<b>7 YEARS</b> parts and labor

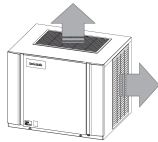
CIMO826/O825 CUBE ICE MAKER



CIMO826/O825 CUBE ICE MAKER



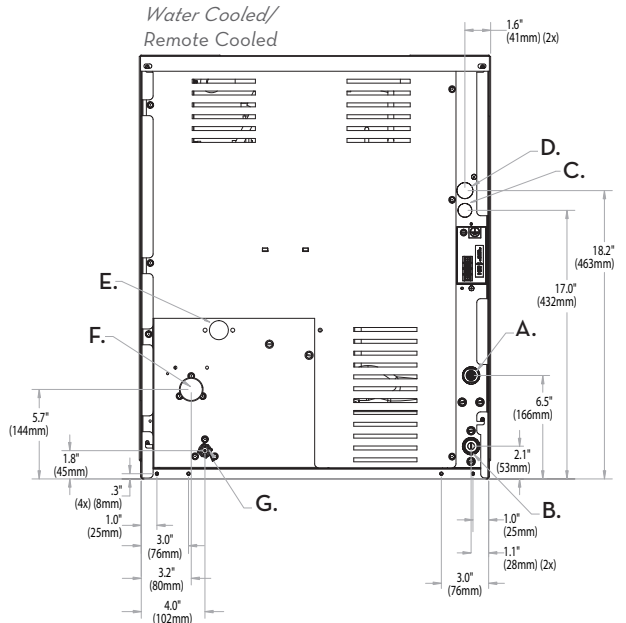
Dual Exhaust for Installation Flexibility



**Air Cooled**

Please note: air-cooled units require 6" (152 mm) clearance for air intake and exhaust.

- A. Ice maker potable water in, 3/8" FPT.
- B. Ice maker water out, 3/4" FPT.
- C. Hole for electrical connections, 7/8".
- D. Electrical connection junction box, 7/8".



**Water Cooled/Remote Cooled**

- A. Ice maker potable water in, 3/8" FPT.
- B. Ice maker water out, 3/4" FPT.
- C. Hole for electrical connections, 7/8".
- D. Electrical connection junction box, 7/8" (remote).
- E. Condenser water in, 3/8" FPT (water only). Discharge line, 1/2" male quick connect coupling for precharged line set (remote only).
- F. Condenser water out, 1/2" FPT (water only).
- G. Liquid line, 3/8" male quick connect for precharged line set (remote only).

**Operating Requirements**

	MINIMUM	MAXIMUM	
		60 Hz	50Hz
Ambient Temp. Range Air	50°F (10°C)	100°F (38°C)	110°F (43°C)
Water Temp.	40°F (4.4°C)		
Water Pressure	20 PSIG (1.4 BAR)	80 PSIG (5.5 BAR)	
Remote Condenser Temp.	-20°F (-29°C)	120°F (50°C)	

**Dimensions**

ALL MODELS	
W x D x H (in.)	22.25 x 24.25 x 26.9
W x D x H (mm)	565 x 616 x 683

**Specifications**

Model Number	Cond. Unit	Ice Production per 24hrs		Water Usage gallons per 100 lbs of ice 90°F air/70°F water		kWh Used per 100 lbs of ice @ 90°F air/70°F water	Voltage Characteristics	Min. Circuit Ampacity	Max Breaker Size	Approx. BTUs per hour
		70°F air/50°F water lbs (kg)	90°F air/70°F water lbs (kg)	Potable	Condenser					
CIMO826A	Air	896 (406)	668 (303)	19.0	N/A	5.2	208-230/60/1	11.8	20	15,100
CIMO826R**	Remote	906 (411)	769 (348)		4.8					
CIMO826W	Water	896 (406)	774 (351)		140.0	4.2		11.3		
CIMO825A	Air	922 (418)	726 (329)	18.0	N/A	4.73	220-240/50/1	10.8	16	14,350
CIMO825R**	Remote	912 (414)	814 (369)		4.38					
CIMO825A-49	Air	900 (408)	700 (316)		4.9	10.8				

\* Daily ice production based on half cube configuration. When installing a CIM on a drink dispenser, the KCUBEDISPB MUST be used.

\*\* Remote models CIMO826R & CIMO825R require the RCA-2061 remote condenser with optional grill guard kit.

Number of Wires: 3 (including ground)  
Approx. Shipping Weight lbs (kg): CIMO826A 220 (100) • CIMO826R 220 (100) • CIMO825A 220 (100) • CIMO825R 220 (100)

**REFRIGERANT:** Models ending in -49 are R449A, all other models are R404A  
CIMO825A = R404A • CIMO825A-49 = R449A